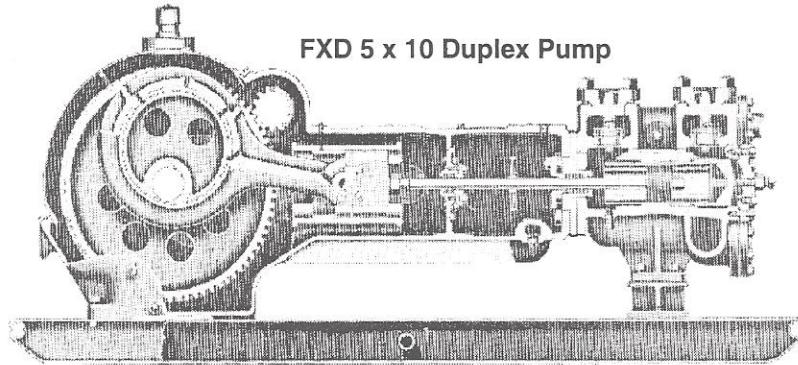


Gardner-Denver FX Duplex Pumps

52 to 487 Gallons Per Minute Displacement



FXD 5 x 10 Duplex Pump

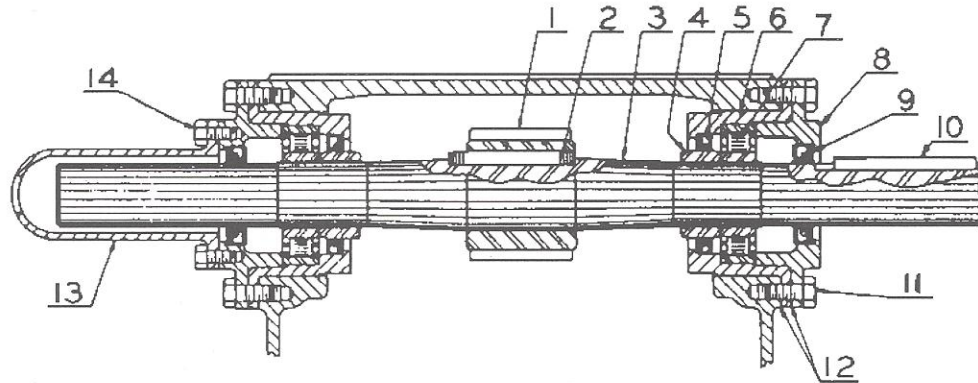
SIZES and RATINGS - FX DUPLEX PUMPS FOR MUD PUMPS AND CEMENT SERVICE

Size Number and Stroke	† Liner Size Diameter		Displacement		Maximum Pressure		Maximum Piston Load		Max Pump RPM	Jack-shaft RPM	Input HP at Maximum Speed	Pipe Sizes				Approximate Weight Without Skid	
												Suction		Discharge			
	In	mm	GPM	BPH	PSI	Kg/cm 2	Lb	Kg				In	mm	In	mm	Lb	Kg
FF-FXF 5" (127 mm)	4-1/2	114.3	121	173	197	13.85	3140	1424	90	439	16.2	2-1/2	64	2	51	1475	669
	4	101.6	94.4	135	250	17.58											
	3-1/2	88.9	72.3	103	326	22.92											
	3	76.2	52.4	75	444	31.22											
	2-1/2	63.5	35.6	50.9	639	44.93											
FF-FXG 6" (152 mm)	5	127.0	150	214	310	21.80	6122	2777	75	354	32	4	102	2	51	2330	1057
	4-1/2	114.3	121	173	385	27.07											
	4	101.6	94.9	136	492	34.59											
	3-1/2	88.9	71.9	103	646	45.42											
	3	76.2	52.0	74.3	895	62.93											
FD-FXX 8" (203 mm)	5-1/2	139.7	222	317	338	23.76	8036	3645	70	330	51.5	4	102	3	76	4775	2166
	5	127.0	182	260	409	28.76											
	4-1/2	114.3	146	209	505	35.51											
	4	101.6	113	161	640	45.00											
	3-1/2	88.9	84.7	121	836	58.78											
*FC-FXX 8" (203mm) Divided Fluid End	5	127.0	182	260	409	28.76	8036	3645	70	330	51.1	4	102	3	76	5065	2297
	4-1/2	114.3	146	209	505	35.50											
	4	101.6	113	161	640	45.00											
	3-1/2	88.9	84.7	121	836	58.78											
	3	76.2	59.9	85.6	1136	79.87											
FY-FXX 8" (203mm) Divided Fluid End	7-1/2	190.5	420	600	182	12.80	8036	3645	70	330	52.4	6	152	4	102	5925	2688
	7-1/4	184.2	391	559	195	13.71											
	7	177.8	365	521	209	14.69											
	6-3/4	171.5	322	460	217	15.26											
	6-1/2	165.1	313	447	242	17.02											
FD-FXD 10" (254 mm)	5-1/2	139.7	257	367	475	33.40	11,270	5112	65	390	83.8	4	102	3	76	6065	2751
	5	127.0	211	301	574	40.36											
	4-1/2	114.3	169	241	709	49.85											
	4	101.6	131	187	897	63.07											
	3-1/2	88.9	98.3	140	1171	82.33											
*FC-FXD 10" (254mm) Divided Fluid End	5	127.0	211	301	574	40.36	11,270	5112	65	390	83.1	4	102	3	76	6235	2828
	4-1/2	114.3	169	241	709	49.85											
	4	101.6	131	187	897	63.07											
	3-1/2	88.9	98.3	140	1171	82.32											
	3	76.2	69.6	99.4	1594	112.07											
FY-FXD 10" (254mm) Divided Fluid End	7-1/2	190.5	487	696	255	17.93	11,270	5112	65	390	85.2	6	152	4	102	7075	3209
	7-1/4	184.2	454	649	273	19.19											
	7	177.8	423	604	292	20.53											
	6-3/4	171.5	392	560	315	22.15											
	6-1/2	165.1	364	520	339	23.84											
FXO-FXO 10" (254mm) Divided Fluid End	5	127.0	223	319	772	54.28	15,150	6872	70	329	118.2	4	102	3	76	8300	3765
	4-1/2	114.3	179	256	951	66.86											
	4	101.6	138	197	1206	84.79											
	3-1/2	88.9	102	146	1500	105.47											
FO-FXO 10" (254mm) Divided Fluid End	7-1/4	184.2	486	694	367	25.80	15,150	6872	70	329	122.4	6	152	3	76	10500	4763
	7	177.8	452	646	393	27.63											
	6-3/4	171.5	419	599	423	29.74											
	6-1/2	165.1	388	554	457	32.13											
	6	152.4	328	469	536	37.69											

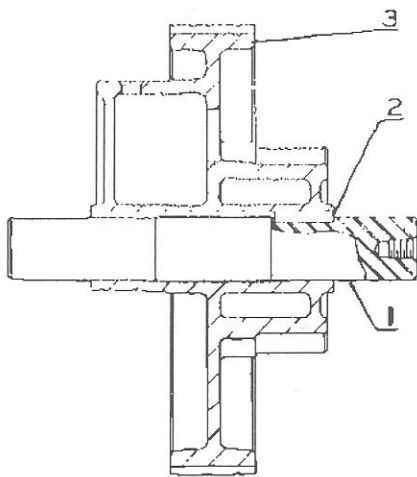
* Cast steel fluid cylinders tested to 7000 pounds available as extra equipment.

† Fluid cylinder liners and pistons are interchangeable in all sizes in the tables except for FF cylinders fitted with 4-1/2" parts and FD cylinders fitted with 5-1/2" parts.

FXG 6" Stroke Duplex Power Pump

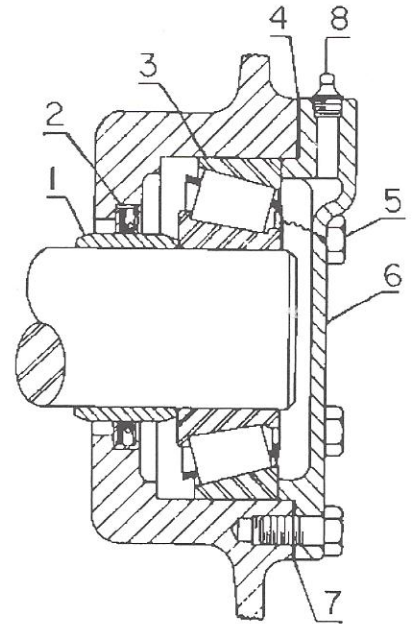


Jackshaft

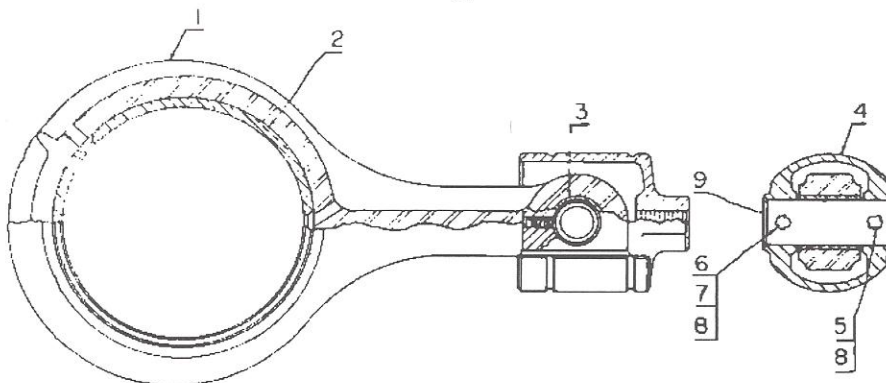


Eccentric Gear & Shaft

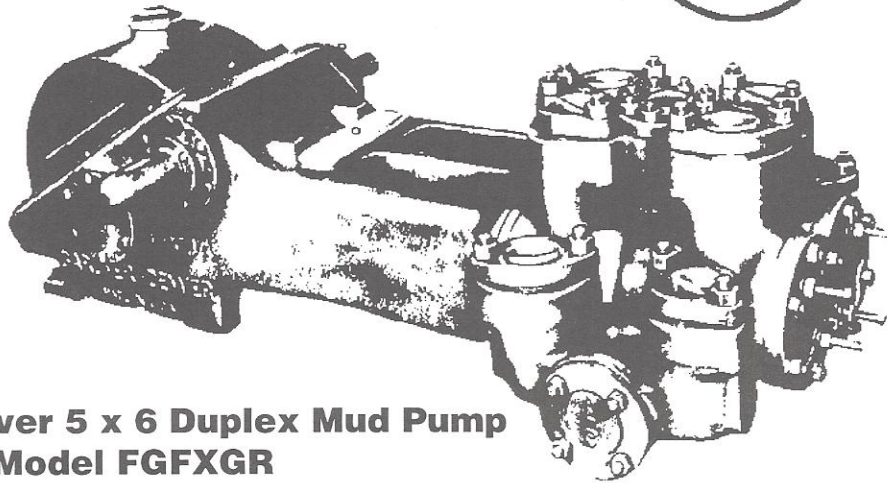
Eccentric Shaft Bearing



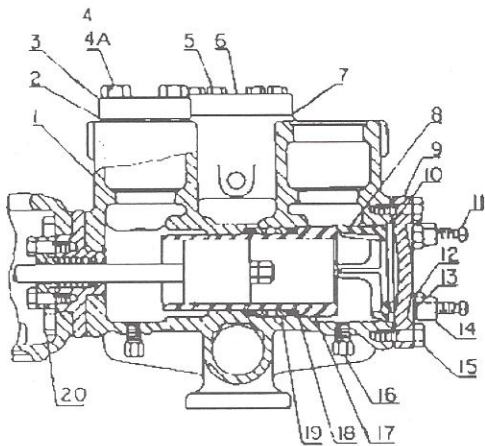
Connecting Rod & Crosshead



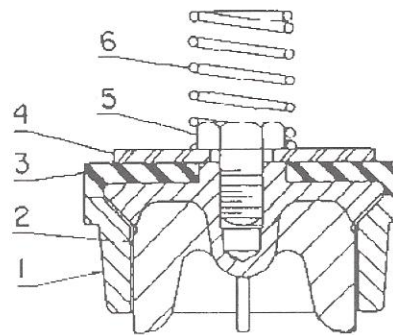
**Gardner Denver & George E. Failing
Drilling Rig Parts, Mud Pumps
& Pump Parts**



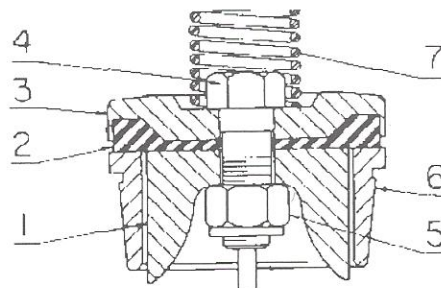
**Gardner Denver 5 x 6 Duplex Mud Pump
Model FGFXGR**



Fluid End

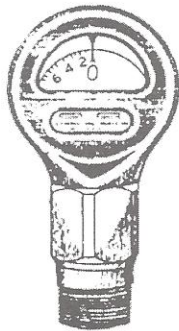
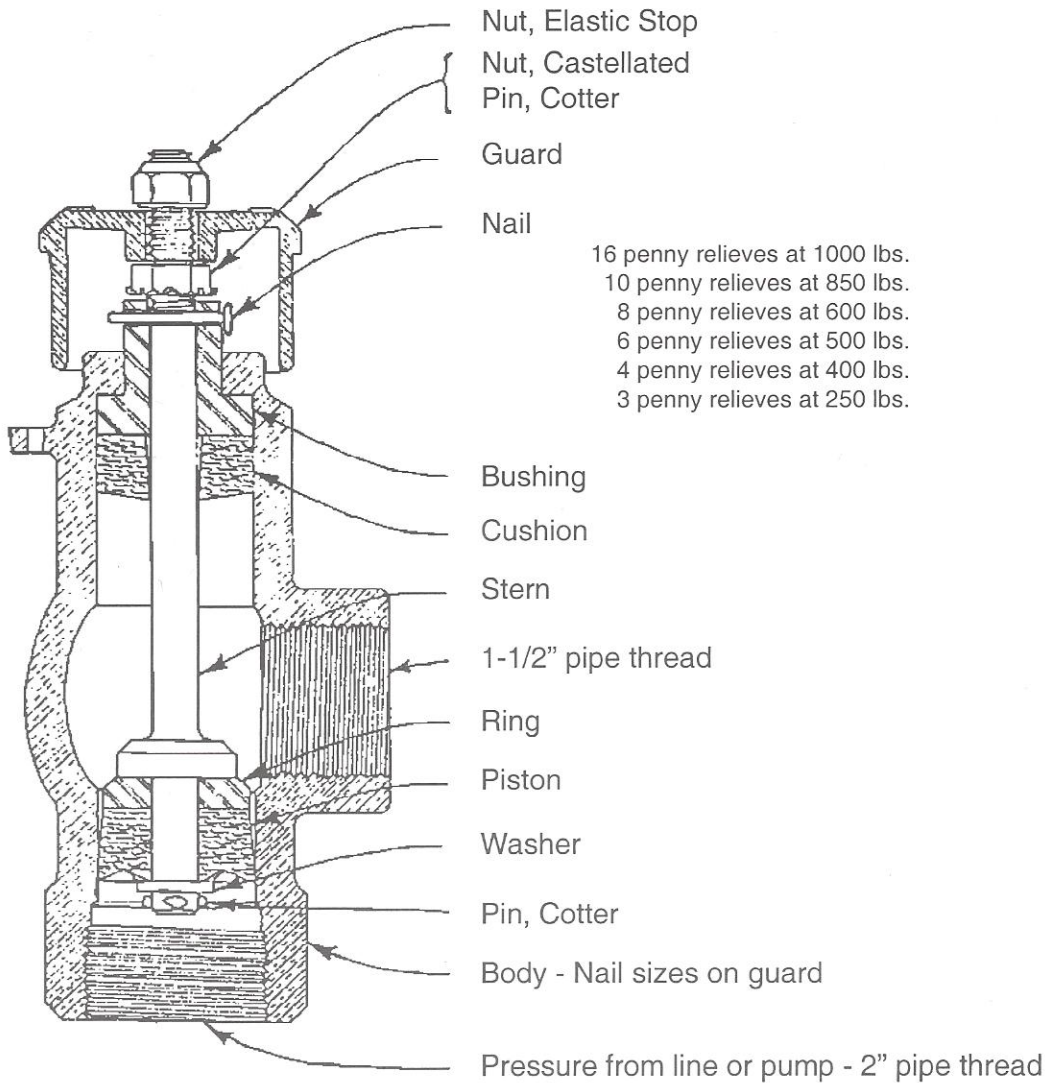


Standard Valve



Gravel Valve

SHEAR RELIEF VALVE



Type "F" Pressure Gauge

0 — 1,000 PSI

- The self-contained dampening mechanism in this gauge requires no adjustment for changes in pressure range, and gives uniformly steady pressure readings.
- The dial and internal parts are cushioned against line vibrations and the gauge window will not frost in cold weather.
- Ideal for slush pump service, portable core drills and pipe lines.
- Has 2" N.P.T. male bottom connection.